

AbraPlan-20



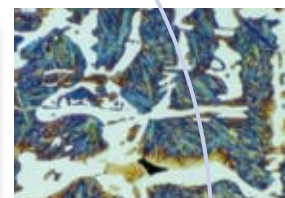
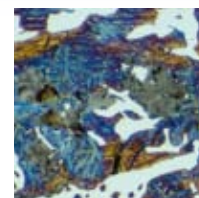
An automatic, high-capacity machine for fast and efficient plane grinding



AbraPlan-20 is a powerful and fast plane grinding machine ideal for laboratories or workplaces carrying out quality control testing of very large specimens or a high volume of specimens

Unique advantages

- Fast and efficient plane grinding providing high planeness and reproducibility, thus saving valuable time on the subsequent preparation steps
- Easy to operate without requiring extensive training
- Fully automatic dressing of grinding stone
- Controlled material removal
- Sturdy and powerful design ensuring trouble free operation year after year
- Maximum level of operator safety
- Various grinding modes
- Built-in flush hose for easy maintenance



Sturdy and powerful

AbraPlan-20 is the strongest plane grinding machine available on the metallographic market. The powerful motors, the sturdy design and the well-known Struers technology contribute to many years of trouble-free use.

The AbraPlan-20 is an ideal plane grinding machine for users with very large specimens or with a high volume of specimens.

On the 356 mm / 14" diameter grinding stones, 200 mm / 8" diameter sample holders can be utilized efficiently taking up to 12 specimens at a time.

Whenever capacity or preparation time is crucial, AbraPlan-20 is the obvious choice. One AbraPlan-20 can easily provide enough work for two or three polishing machines, or be employed as a pre-grinder for the fully-automatic MAPS system.

Time saving

The grinding stone rotates at 1,450 rpm guaranteeing a very high material removal. Using Al_2O_3 and SiC grinding stones, AbraPlan-20 can grind both ferrous and non-ferrous metals. For ceramics and sintered carbides a resin bonded diamond grinding disc is available.

With typical grinding times of 20-30 seconds, a high quality surface finish is achieved quickly. Specimen planeness and reproducibility is unmatched on the metallographic market, saving time on the subsequent fine grinding and polishing steps.

User-friendly design

The AbraPlan-20 is very easy to operate and extensive training is therefore unnecessary. A large display offers the operator a good overview of the process parameters, and the push/turn knob makes it easy to select and edit parameters.

A countdown feature allows the operator to see the remaining grinding time or remaining material removal.

Automatic dressing

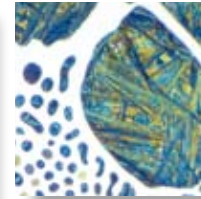
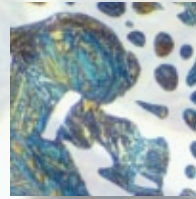
The AbraPlan-20 is provided with an automatic diamond dresser that keeps the grinding stone plane and sharp. The performance of the grinding stone is monitored continuously, and as soon as the removal is reduced below a pre-defined level, the stone is dressed.

This guarantees the best possible performance of the AbraPlan-20 and a perfect surface quality of the ground specimens. The dresser also automatical-

ly monitors the remaining thickness of the grinding stone and informs the user when the stone has to be replaced.

Controlled material removal

In many situations grinding for a specified grinding time is not a good idea. With small samples too much material might be removed, while large samples or hard materials may barely have been touched. Therefore, the AbraPlan-20 is equipped with a sensor to accurately measure the material removal. The Accurate Material Removal Unit allows you to pre-set the amount of material that has to be removed. The removal can be set from 0.01 mm to 2.00 mm in increments of 10 μ m.



A large display offers a good overview of the process parameters



A high quality surface finish is achieved quickly, saving time on the next preparation steps



The automatic dresser maintains a perfectly plane and sharp grinding stone at all times

Three different grinding modes

On the AbraPlan-20 you can choose between three different grinding modes: Removal, Time and Removal/Time.

The **Removal** function allows removing a specified amount of material when grinding, and is advantageous when specimens of different size and hardness have to be prepared together.

The **Time** function can be used when specimens of the same size and hardness have to be ground every time.

The **Removal/Time** function can be used to obtain the most plane specimens: First the specimens are ground using removal mode until the required amount of ma-



Inside AbraPlan-20 there is room for a recirculation cooling unit, or a band filter can be placed next to the machine



AbraPlan-20 is equipped with a transparent safety shield to secure operator safety

terial has been removed. Then the stone is dressed, to make sure it is absolutely plane and well cutting, and then the specimens are ground again for a very short time, i.e. 5 seconds. This guarantees the most plane specimens possible.

Maximum operator safety

Struers recognizes the importance of a safe working environment and has equipped AbraPlan-20 with several safety features.

The grinding stone and the sample holder are totally encapsulated with stainless steel covers, eliminating the risk of incorrectly clamped specimens flying out.

The entire working area is encapsulated using a transparent cover. Thus there is no access at all to any rotating parts. The machine cannot be started before the cover is closed, and the cover can first be opened again when the machine has stopped.

Additionally the machine is equipped with an emergency stop, which stops all machine functions immediately when engaged.

Easy cleaning

The flushing unit allows for easy cleaning of the grinding area, samples and the grinding chamber.

A recirculation cooling unit can be connected for cost-efficient water utilization and to collect removed abrasives.

It is recommended to connect a cooling unit so that a rust inhibitor can be used in the cooling water and the debris from grinding can be collected.



AbraPlan-20 is the strongest plane grinding machine available on the materialographic market



Technical data

Grinding wheel	Rotational speed Size	1450 rpm 356 mm / 14"
Specimen holder	Speed Force Max. size sample holder	150 rpm 50-700 N 200 mm / 8"
Software and Electronics	LC Display Controls	320 x 240 characters Touch pad and Push-turn knob
Environment	Noise level Surrounding temperature Humidity	70 dB(A) 5-40 C° Max. 95% RH
Supply voltage	Power consumption No. of phases Output, main motor	4.5 kW 3 (3L+PE) 4 kW
Compressed air	Compressed air supply	6-10 bar
Dimensions and weight	Width Depth Height Weight	832 mm / 32.8" 957 mm / 37.7" 1570 mm / 61.8" 481 kg / 1060 lbs

Struers' equipment is in conformity with the provisions of the applicable International Directives and their appurtenant Standards (please contact your local supplier for details).

Specifications

AbraPlan-20

Automatic plane grinding machine for specimens in specimen holders 160 mm / 6.3" and 200 mm / 8" diameter. With automatic diamond dresser and removal rate sensor. Recirculation cooling unit (05766xxx), grinding stone and specimen holders are ordered separately.

Cat. no:

058961xx

Accessories

Recirculation Cooling Unit

With 50 l tank, small pump, Cooli-1, 50 l static filter with filter paper, consists of: 05766906, 05766916, 05761116, 05766908, 057661xx.

057665xx

057666xx

Grinding Stone

Grit 60. Aluminium oxide grinding stone for plane grinding of soft and ductile metals (<HV 250). 356 mm / 14" diameter.

40800009

Grinding Stone

Grit 150. Aluminium oxide grinding stone for plane grinding of harder metals (>HV 250). 356 mm / 14" diameter.

40800010

Grinding Stone

Grit 150. SiC grinding stone for plane grinding of non-ferrous metals. 356 mm / 14" diameter.

40800074

Diamond Grinding Disc

Grit 120. Resin bonded disc, grooved in a square pattern, for grinding of ceramics and sintered carbides. 356 mm / 14" diameter.

40800024

Diamond Point for Dressing Tool

For AbraPlan-20.

02606962

BELGIQUE (Wallonie)

Struers S.A.S.

370, rue du Marché Rollay
 F- 94507 Champigny
 sur Marne Cedex
 Téléphone +33 1 5509 1430
 Télécopie +33 1 5509 1449
 struers@struers.fr

BULGARIA

Struers GmbH

Branch Office Bulgaria
 21 Mur Str.
 BG-1680 Sofia
 Phone +359 878 113 961
 hristo.ivanov@struers.de

CANADA

Struers Ltd.

7275 West Credit Avenue
 Mississauga, Ontario L5N 5M9
 Phone +1 905-814-8855
 Fax +1 905-814-1440
 info@struers.com

CZECH REPUBLIC

Struers GmbH

Organizační složka
 Havlíčkova 361
 CZ-252 63 Rostky u Prahy
 Phone +420 233 312 625
 Fax: +420 233 312 640
 david.cernicky@struers.de

CHINA

Struers Ltd.

Office 702 Hi-Shanghai
 No. 970 Dalian Road
 Shanghai 200092, P.R. China
 Phone +86 (21) 5228 8811
 Fax +86 (21) 5228 8821
 struers.cn@struers.dk

DEUTSCHLAND

Struers GmbH

Karl-Arnold-Strasse 13 B
 D-47877 Willich
 Telefon +49 (0) 2154 486-0
 Fax +49 (0) 2154 486-222
 verkauf.struers@struers.de

FRANCE

Struers S.A.S.

370, rue du Marché Rollay
 F- 94507 Champigny
 sur Marne Cedex
 Téléphone +33 1 5509 1430
 Télécopie +33 1 5509 1449
 struers@struers.fr

HUNGARY

Struers GmbH

Magyarországfi fióktelep
 Puskás Tivadar u. 4
 H-2040 Budaörs
 Phone +36 (23) 428-742
 Fax +36 (23) 428-741
 zoltan.kiss@struers.de

IRELAND

Struers Ltd.

Unit 25a
 Monkspath Business Park
 Solihull B90 4NZ
 Phone +44 (0)121 745 8200
 Fax +44 (0)121 733 6450
 info@struers.co.uk

JAPAN

Marumoto Struers K.K.

Takara 3rd Building
 18-6, Higashi Ueno 1-chome
 Taïto-ku, Tokyo 110-0015
 Phone +81 3 5688 2914
 Fax +81 3 5688 2927
 struers@struers.co.jp

NEDERLAND/BELGIE

Struers GmbH Nederland

Electraweg 5
 NL-3144 CB Maasluis
 Tel. +31 (0) 10 599 72 09
 Fax +31 (0) 10 599 72 01
 glen.van.vugt@struers.de

POLAND

Struers Sp. z o.o.

Oddział w Polsce
 ul. Lirowa 27
 PL-02-387 Warszawa
 Phone +48 22 824 52 80
 Fax +48 22 882 06 43
 grzegorz.uszynski@struers.de

ROMANIA

Struers GmbH

Sucursala Sibiu
 Str.Scoala de Inot, nr. 18
 RO-550005 Sibiu
 Phone +40 269 244 558
 Fax +40 269 244 559
 nicu-ovidiu.aunguroancei@struers.de

SCHWEIZ

Struers GmbH

Zweigniederlassung Schweiz
 Weissenbrunnenstrasse 41
 CH-8903 Birmensdorf
 Telefon +41 44 777 63 07
 Fax +41 44 777 63 09
 rudolf.weber@struers.de

SINGAPORE

Struers A/S

627A Aljunied Road,
 #07-08 BizTech Centre
 Singapore 389842
 Phone +65 6299 2268
 Fax +65 6299 2661
 struers.sg@struers.dk

SWEDEN

Struers A/S

Ekbacksvägen 22, 3 tr
 SE-168 69 Bromma
 Telefon +46 (0)8 447 53 90
 Telefax +46 (0)8 447 53 99
 struers@struers.dk

UNITED KINGDOM

Struers Ltd.

Unit 25a
 Monkspath Business Park
 Solihull B90 4NZ
 Phone +44 0121 745 8200
 Fax +44 0121 733 6450
 info@struers.co.uk

USA

Struers Inc.

24766 Detroit Road
 Westlake, OH 44145-1598
 Phone +1 440 871 0071
 Fax +1 440 871 8188
 info@struers.com

ÖSTERREICH

Struers GmbH

Zweigniederlassung Österreich
 Ginzkeyplatz 10
 A-5020 Salzburg
 Telefon +43 662 625 711
 Fax +43 662 625 711 78
 stefan.lintschinger@struers.de

Struers' products are subject to constant product development. Therefore, we reserve ourselves the right to introduce changes in our products without notice

www.struers.com